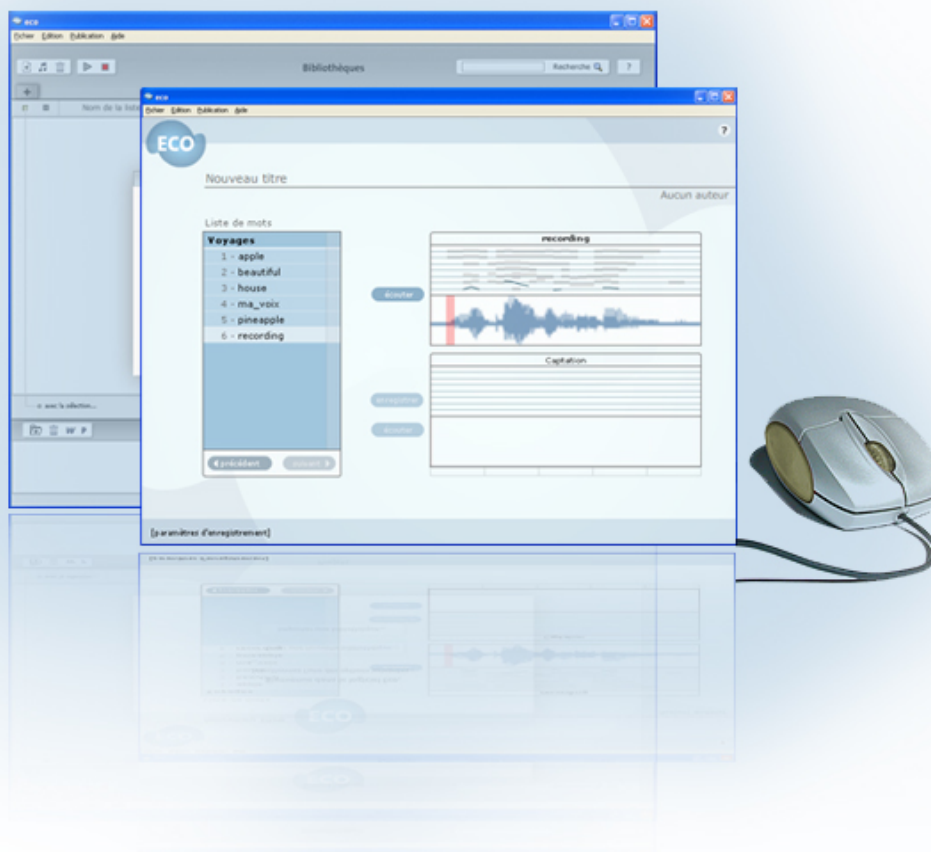




TRAINING TOOL FOR PRONUNCIATION



User Guide – Exercises Site



Contents

PRONUNCIATION EXERCISES SITE	3
Entering the site	3
Home page	4
Main screen.....	5

PRONUNCIATION EXERCISES SITE

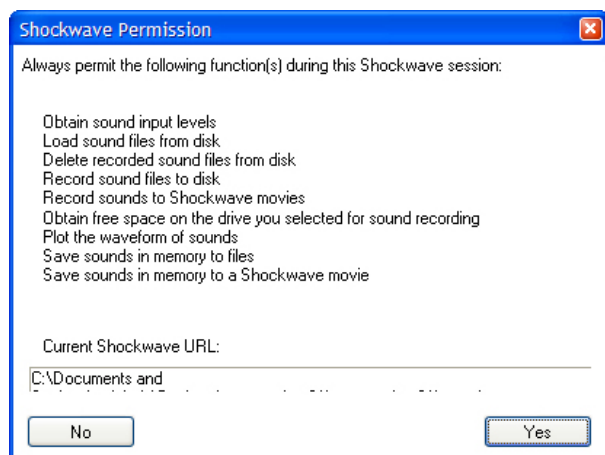
The **ECO Pronunciation Exercises** site allows students to access pronunciation exercises using a Web browser. Students can then listen to pre-recorded control sounds organized in lists, then record their own voices to check their pronunciation using a graphic representation and a performance indicator.

Entering the site

The **Pronunciation Exercises** site can be accessed using a Web browser that includes Flash and Shockwave plug-ins from Adobe. To access it, enter the address of the exercises site into the Web browser.


When the project directory is on a workstation, simply click on the corresponding **index.htm** file.

When entering the site, the following window may appear the first time:



Simply click **Yes** to accept the plug-in.

Follow the instructions on the screen if the plug-in is not installed.

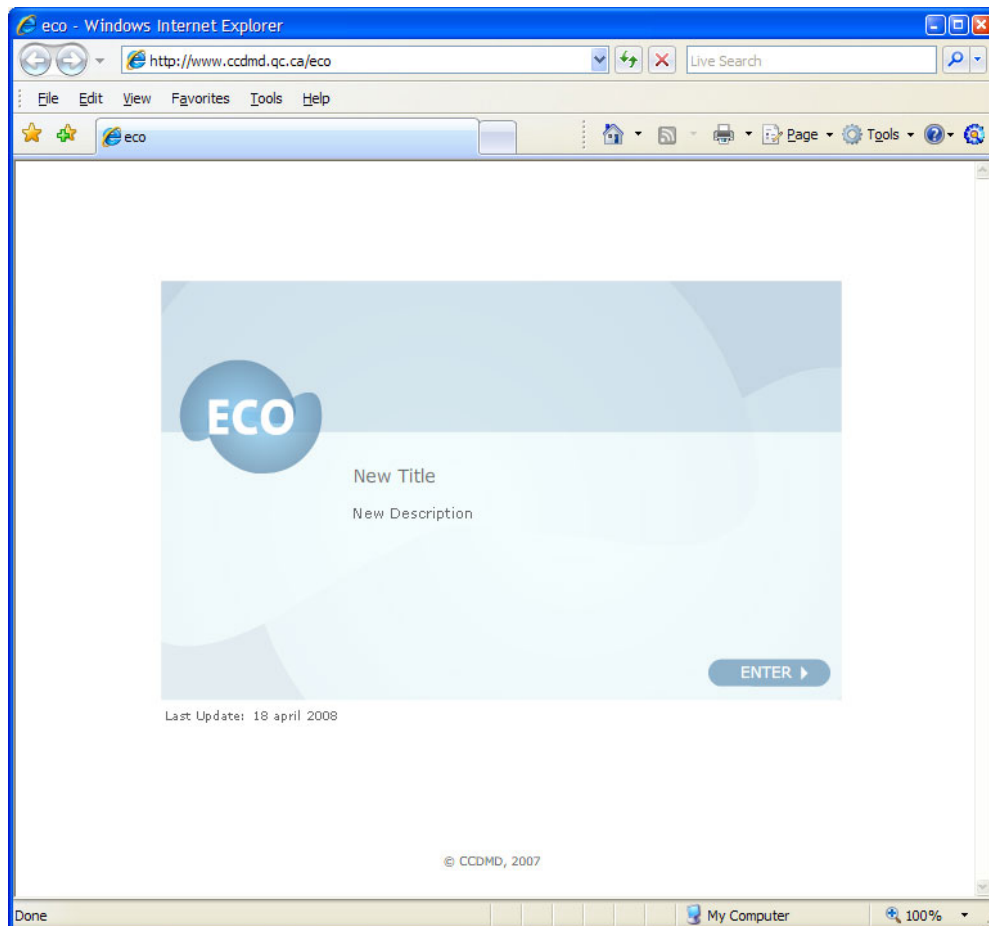


Flash and Shockwave players (plug-ins)
For more information on Flash and Shockwave players, refer to the following link: <http://adobe.com>.

Home page

The following screen shows the home page. This page will be accessible when you enter the site only if the author selected the option to show it.

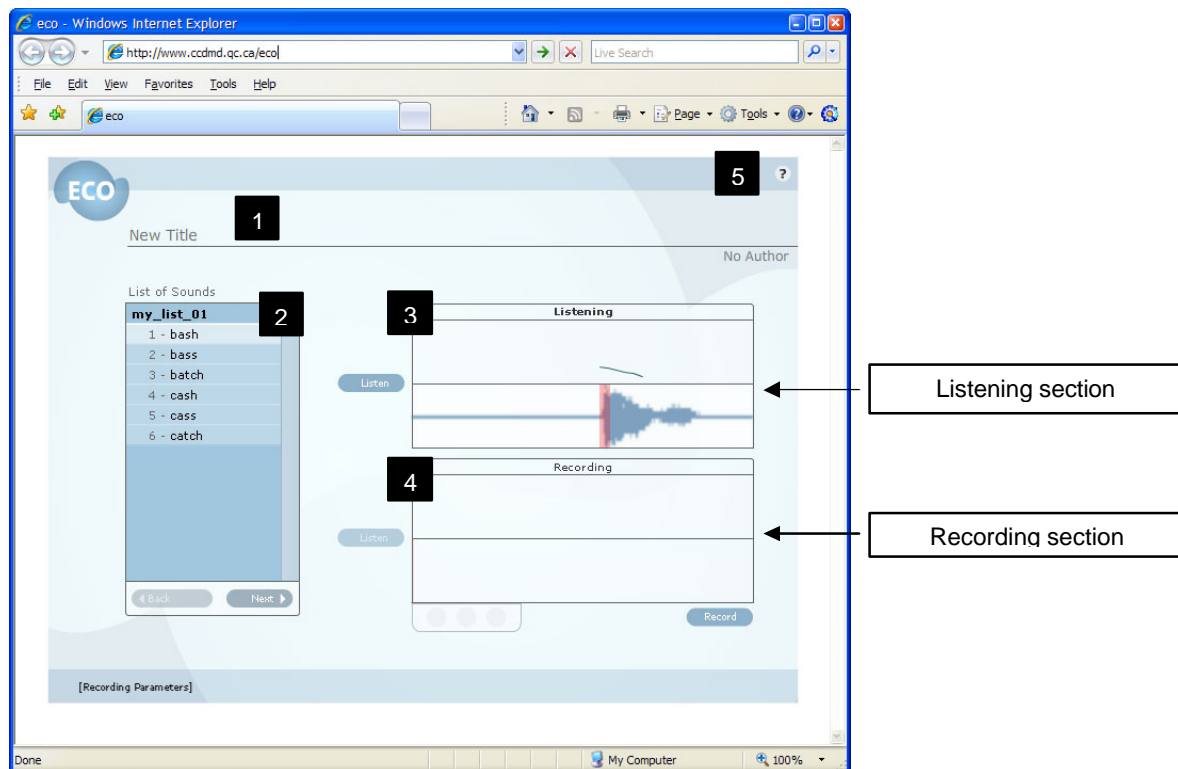
On this page, you will find the title of the project, a short description and the date of the last update. To enter the application, click **Enter**.



Main screen

The main screen of the **Pronunciation Exercises** site consists of five elements:



1. Project title
2. List of pre-recorded control sounds
3. Listening section: the graphic of the pre-recorded control sound
4. Recording section: the pronunciation recording graphic
5. Support documentation



Test before starting up

The precision of the tool depends on the computer configurations and the configuration parameters (volume, audio card, microphone, webcam). To obtain the best results, experiment with the configuration and precision of the peripherals.

List of control sounds

The list of pre-recorded control sounds can be found at the left of the screen. Select a sound by clicking on it. You can also browse from one sound to the next by using the  and  buttons, which can be found at the bottom of the list.

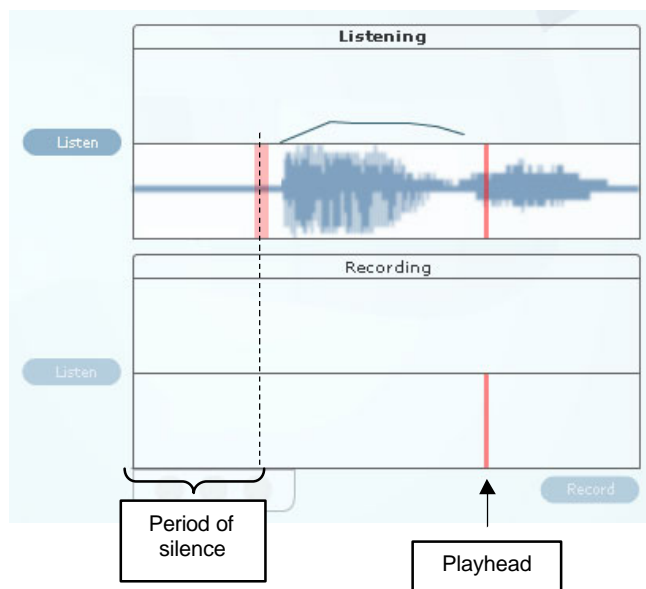
Listening section

To listen to a sound after selecting it, click **Listen**, to the left of its graphic representation.

As soon as you click on this button, a marker starts to move and follows the graphic of the control sound from left to right. This indicator is also used to follow the tempo during recording.

Recording section

The button that allows you to record a sound does not become active until after you have listened to the pre-recorded control sound. To obtain the best results when you record, you should synchronize with the movement of the playhead and begin to pronounce the sound after the period of silence, as soon as the playhead passes the red bar in the graphic of the control sound.



Once you have listened to the control sound the first time, the **Record** button becomes active. You can then click on this button to record your pronunciation.

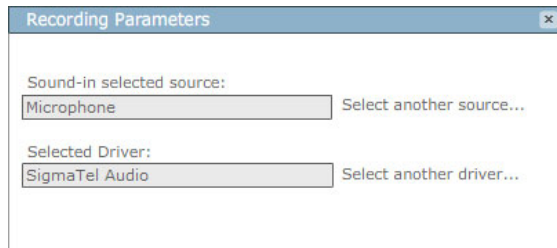


For best results

Once the recording begins, it is best to follow the playhead and start to record at exactly the same location in the graphic of the control sound, that is, immediately after the period of silence.

Parameters for recording

A button in the lower left-hand corner of the screen allows you to display the recording parameters: the audio source (microphone or webcam) or the driver (audio card). These parameters can be changed at any time and should be tested before beginning the session.

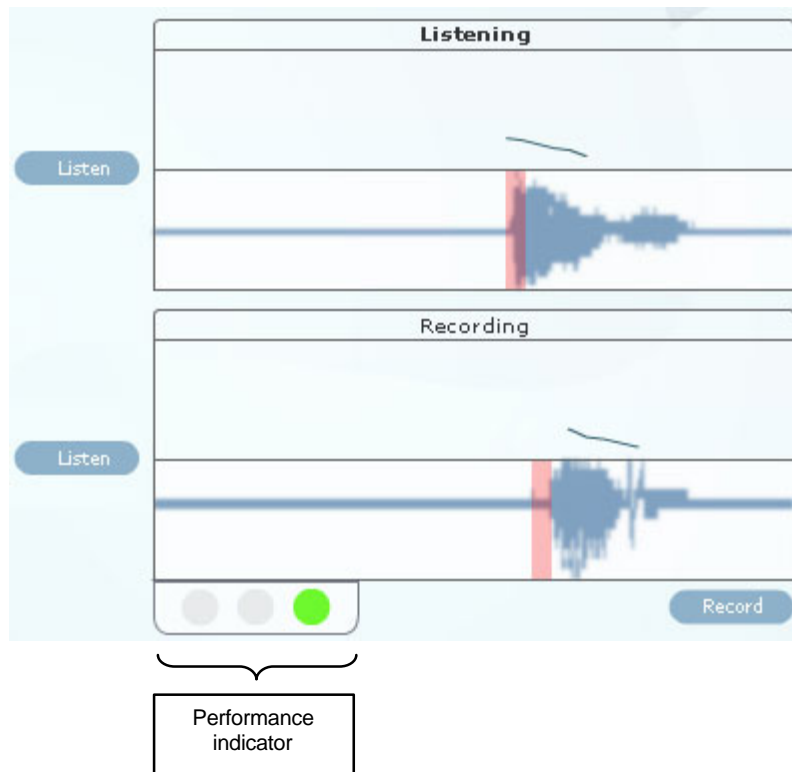


Adjustments to be made

During recording, it could happen that the microphone volume is not at exactly the same level as the pre-recorded control sounds, which could cause some distortion that affects the accuracy of the tool. In this case, make the required adjustments to the computer configuration (volume level of the microphone) and repeat the sound tests.

Performance indicator

After you record a sound, a performance indicator using a coloured indicator light (red, yellow, green) will show the quality of your pronunciation compared to the control sound.



In the preceding example, the performance indicator shows a green light, which corresponds to good pronunciation. A yellow or red light indicates that your pronunciation could be improved.

This tool does not claim to be scientific. Its goal is to help you learn to pronounce languages. In addition to consulting the color indicators, it is recommended that you compare the curves in the two graphics, as this will give you a good idea of how successful your pronunciation is.

You will also note in the example that the graphic at the bottom, which corresponds to the recording, is shifted slightly to the right. This is the result of a slight period of silence in starting the recording. It is important to begin at the same time as the recording of the control sound to obtain the best results.

Once you have obtained the expected result (preferably green), go to the next sound, and so on.